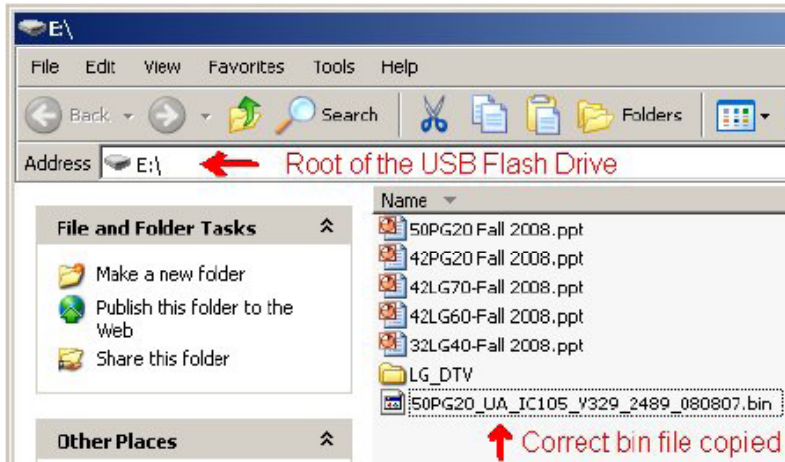


Generic Plasma USB Automatic Software Download Instructions

1) Download the Software File.



2) Copy new software (xxx.bin) into the root of the Jump Drive. Make sure you have the correct software file.

3) With TV turned on, insert USB flash drive.

4) You can see the message

“TV Software Upgrade” (See figure on right)

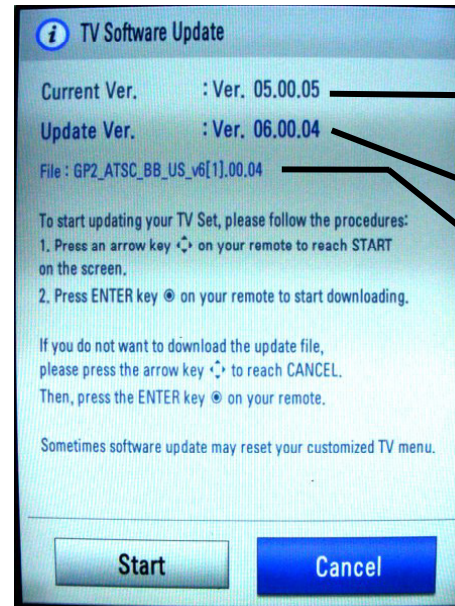
5) Cursor left and highlight "START" Button and push “Enter” button using the remote control.

6) You can see the download progress Bar.

7) Do not unplug until unit has automatically restarted.

8) When download is completed, you will see “COMPLETE”.

9) Your TV will be restarted automatically.



Currently Installed Version

Software Version found on the USB Flash Drive

File found on the USB Flash Drive

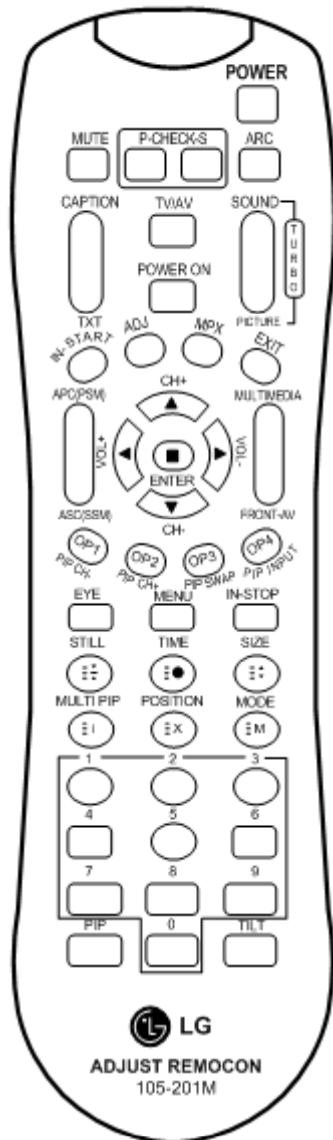
Highlight Start Press Select

*** CAUTION:**

Do not remove AC power or the USB Flash Drive. Do not turn off Power, during the upgrade process.

Software Files are available from GCSC or GSFS.com

Accessing the Service Menu



105-201M

To access the Service Menu.

- 1) You must have either Service Remote. p/n 105-201M or p/n MKJ39170828
- 2) Press "In-Start"
- 3) A Password screen appears.
- 4) Enter the Password.

Note: A Password is required to enter the Service Menu. Enter; **0000**

Note: If **0000** does not work use **0413**.



MKJ39170828

SERVICE AND ADJUST MENU ITEMS

This section of the manual will discuss the Service Menu and the Adjust Menu In the 42PW350 Advanced Single Scan Plasma Display Panel.

Upon completion of this section the Technician will have a better understanding of the Service and Adjust Menus used in this model.



42PW350 Service Menu First Page

Bring up the Service Menu using the Service Remote by pressing "In-Start" enter password 0413 or 0000.

IN SART	Software Version	Country Group	Adjust Check
Model Name: 42PW350-UA	1. Adjust Check	1. Country Group (Press OK to Save)	
Serial Number: 010PTZK1F285	2. ADC Data	Country Group Code	02
S/W Version: : 03.26.02.11	3. Power Off Status	Country Group	US
MICOM Version : 3.24.0	4. System 1	Country	US
SPI Boot Version : 4.24.00	5. System 2	2. Tool Option	
BOOT Version : 0.01.17	6. Model Number D/L	Tool Option 1	32777
Touch Version : 0.05 (0x00)	7. Model Number Option	Tool Option 2	65
EDID Version (RGB) : 0.01	8. Model Number Internal ADC	Tool Option 3	7519
EDID Version (HDMI) : 0.01	9. Pattern Selection	Tool Option 4	7560
Chip Type : SATURN 7	10. Panel Control	Tool Option 5	14925
3D ASIC Version : 0.77	11. Spread Spectrum	3. Adjust White Balance:	OK
Debug Status : RELEASE	12. Sync Level	4. Adjust ADC:	OK
Module Rom Ver: : 42T3_4PV3A0	13. Stable Count	480i Component	OK
RF Emitter Versioni : VB091	14. ODC Test	1080p Component	OK
	Power Error History	RGB	OK
UTT : 12		5. EDID(AC3):	OK
APP History Ver.:53810		RGB	OK (0x5E)
PQL D...GE_PG_LGT10_xxN42		HDMI1	OK (0x12,0xD2)
		HDMI2	OK (0x12,0xC2)
		HDMI3	OK (0x12,0xB2)

42PW350 Lip Sync Adjust (IN START) Screen

Bring up the Service Menu using the Service Remote by pressing "In-Start" enter password 0413 or 0000.

IN SART		SYSTEM 1	
Model Name: 42PW350-UA		0. Baudrate	115200
Serial Number: 010PTZK1F285		1. 2 Hours Off (On Timer)	On
S/W Version: : 03.26 02 11		2. 2 Hours Off (Screen Mute)	Off
MICOM Version : 3.24	Select Item 4	3. 15Min Force Off	On
SPI Boot Version : 4.24		4. Audio EQ	On
BOOT Version : 0.01.17		5. Dynamic EQ	On
Touch Version : 0.05 (0x00)		6. A2 Threshold	11
EDID Version (RGB) : 0.01		7. HDMI Sound(Port1)	HDMI Port1
EDID Version (HDMI) : 0.01		8. Lip Sync Adjust(DTV)	0
Chip Type : SATURN 7		9. Dimming	On
3D ASIC Version : 0.77		10. Tuner Option	Enhanced Ghost
Debug Status : RELEASE		11. Atten RF Signal	Off
Module Rom Ver: : 42T3_4PV3A0		12. UTT Reset	Reset
RF Emitter Versioni : VB091		13. Channel Mute	On
		14. Debug Status	RELEASE
		15. NVRAM Type	EEPROM
		16. HDEV	Off
		17. Blue back	On
		18. China Cable SO	On
		19. Booster On (VHF)	0
		20. Booster Off (VHF)	0
		21. Booster On (UHF)	0
		22. Booster Off (UHF)	0

IN SART		SYSTEM 1	
1. Adjust Check		0. Baudrate	115200
2. ADC Data		1. 2 Hours Off (On Timer)	On
3. Power Off Status		2. 2 Hours Off (Screen Mute)	Off
4. System 1	Select Item 4	3. 15Min Force Off	On
5. System 2		4. Audio EQ	On
6. Model Number D/L		5. Dynamic EQ	On
7. Test Option		6. A2 Threshold	11
8. External ADC	Select Item 8	7. HDMI Sound(Port1)	HDMI Port1
9. Pattern		8. Lip Sync Adjust(DTV)	0
10. Panel		9. Dimming	On
11. Spread Spectrum		10. Tuner Option	Enhanced Ghost
12. Sync Level		11. Atten RF Signal	Off
13. Stable Count		12. UTT Reset	Reset
14. ODC Test		13. Channel Mute	On
15. Power Error History		14. Debug Status	RELEASE
		15. NVRAM Type	EEPROM
		16. HDEV	Off
		17. Blue back	On
		18. China Cable SO	On
		19. Booster On (VHF)	0
		20. Booster Off (VHF)	0
		21. Booster On (UHF)	0
		22. Booster Off (UHF)	0

42PW350 UTT Reset (IN START) Screen

Bring up the Service Menu using the Service Remote by pressing "In-Start" enter password 0413 or 0000.

IN SART		SYSTEM 1	
Model Name: 42PW350-UA		0. Baudrate	115200
Serial Number: 010PTZK1F285		1. 2 Hours Off (On Timer)	On
S/W Version: : 03.26.02.11	Select Item 4	2. 2 Hours Off (Screen Mute)	Off
MICOM Version : 3.24		3. 15Min Force Off	On
SPI Boot Version : 4.24		4. Audio EQ	On
BOOT Version : 0.01.17		5. Dynamic EQ	On
Touch Version : 0.05 (0x00)		6. A2 Threshold	11
EDID Version (RGB) : 0.01		7. HDMI Sound(Port1)	HDMI Port1
EDID Version (HDMI) : 0.01		8. Lip Sync Adjust(DTV)	0
Chip Type : SATURN 7		9. Dimming	On
3D ASIC Version : 0.77		10. Tuner Option	Enhanced Ghost
Debug Status : RELEASE		11. Atten RF Signal	Off
Module Rom Ver: : 42T3_4PV3A0	Select Item 12	12. UTT Reset	Reset
RF Emitter Versioni : VB091		13. Channel Mute	On
UTT : 12	Unit's Total Time	14. Debug Stat	RELEASE
APP History Ver.:53810		15. NVRAM Ty	EEPROM
PQL DB:LGE_PG_LGT10_xxN42		16. HDEV	Off
		17. Blue back	On
		18. China Cable SO	On
		19. Booster On (VHF)	0
		20. Booster Off (VHF)	0
		21. Booster On (UHF)	0
		22. Booster Off (UHF)	0

Note: After UTT is reset, the UTT time on the left will not reset to "0" until the Service Menu is exited.

Scroll to (System 1) then Right Cursor

Scroll to (UTT Reset) Press (Select) Reset changes to Doing then back to Reset

After Reset (Doing) has completed, Reset returns. After Exit the UTT Timer is "0"

42PW350 Service Menu: Panel Control Shows Control Board Information

Bring up the Service Menu using the Service Remote by pressing "In-Start" enter password 0413 or 0000.

IN START

Model Name: 42PW350-UA
 Serial Number: 010PTZK1F285
 S/W Version: : 03.26.02.11
 MICOM Version : 3.24.0
 SPI Boot Version : 4.24.00
 BOOT Version : 0.01.17
 Touch Version : 0.05 (0x00)
 EDID Version (RGB) : 0.01
 EDID Version (HDMI) : 0.01
 Chip Type : SA
 3D ASIC Version : 0.7
 Debug Status : RELEASE
 Module Rom Ver: : 42T3_4PV3A0
 RF Emitter Versioni : VB091

UTT : 12
 APP History Ver.:53810
 PQL DB:LGE_PG_LGT10_xxN42

10. Panel Control

1. Adjust Check
2. ADC Data
3. Power Off Status
4. System 1
5. System 2
6. Model Number D/L
7. Test Option
8. External ADC
9. Pattern Selection
10. Panel Control
11. Spread Spectrum
12. Sync Level
13. Stable Count
14. ODC Test
15. Power Error History

Panel Control

1. AV/PC	AV
2. ISM	Auto
3. Gamma	0
4. Power Save	Mode 0
5. APS Contrast	95
6. OrbitPixel	2
7. OrbitStep	2 step
8. OrbitTime	120 sec.
9. MRE(FMC)	Off
10. DPS2	Off
11. GRP	Off
12. Module OSD	0
13. Module XDP	On
14. Formatter XDP	On
15. Reset Use Time	

Module Name: 42T3
 Rom Ver. 42T3_4PV3A0
 Temperature: 25.00 Celsius

Unit's Total Time
 UTT Reset
 Cursor Right to activate.
 Yes or No will appear.
 UTT will not change until
 "In Start" key is pressed.

At the bottom right you can see the Panel Model Number, Control board Software Version and the Panel Temperature.

42PW350 Model Number Download Screen

When the Main Board is replaced, the Model Number and Serial Number must be corrected. Follow these instructions

Bring up the Service Menu using the Service Remote by pressing "In-Start" enter password 0413 or 0000.

Scroll down to item 6. Model Number D/L to highlight. Press "**ENTER**" or "**Cursor Right**".

<p style="text-align: center;">IN SART</p> <p>Model Name: 42PW350-UA Serial Number: 010PTZK1F285 S/W Version: : 03.26.02.11 MICOM Version : 3.24.0 SPI Boot Version : 4.24.00 BOOT Version : 0.01.17 Touch Version : 0.05 (0x00) EDID Version (RGB) : 0.01 EDID Version (HDMI) : 0.01 Chip Type : SATURN 7 3D ASIC Version : 0.77 Debug Status : RELEASE Module Rom Ver: : 42T3_4PV3A0 RF Emitter Versioni : VB091</p> <p>UTT : 12 APP History Ver.:53810 PQL DB:LGE_PG_LGT10_xxN42</p>	<p style="text-align: center;">IN SART</p> <ol style="list-style-type: none">1. Adjust Check2. ADC Data3. Power Off Status4. System 15. System 26. Model Number D/L7. Test Option8. External ADC9. Pattern Selection10. Panel Control11. Spread Spectrum12. Sync Level13. Stable Count14. ODC Test15. Power Error History	<p style="text-align: center;">Model Number D/L</p> <table border="1" style="width: 100%;"><tr><td style="width: 60%;">0. Model Name</td><td style="background-color: #FF00FF;">42PW350-UA</td></tr><tr><td>1. Serial Num.</td><td>010PTZK1F285</td></tr></table> <p style="text-align: right;">Press OK to Save</p> <div style="border: 1px solid black; padding: 5px; margin-top: 10px;"><p>To Change the Model Number:</p><ol style="list-style-type: none">1) Use the cursor right or left to select the area to change.2) Use the cursor up or down to change.3) When Model Number is correct, Press "ENTER" to Save4) Cursor right until there is no text cursor blinking.5) Cursor down to highlight "Serial Number"6) Cursor Right to place blinking cursor under the first location and change (as in Item 2 above).5) Press "ENTER" to Save<p>Note: To return to the Model Number, Cursor right until there is no text cursor blinking and press the Up Cursor on the Remote. Cursor Right to place blinking cursor under the first location</p></div>	0. Model Name	42PW350-UA	1. Serial Num.	010PTZK1F285
0. Model Name	42PW350-UA					
1. Serial Num.	010PTZK1F285					

42PW350 UTT Reset (IN START) Screen

Bring up the Service Menu using the Service Remote by pressing "In-Start" enter password 0413 or 0000.

<p style="text-align: center;">IN SART</p> <p>Model Name: 42PW350-UA Serial Number: 010PTZK1F285 S/W Version: : 03.26.02.11 MICOM Version : 3.24.0 SPI Boot Version : 4.24.00 BOOT Version : 0.01.17 Touch Version : 0.05 (0x00) EDID Version (RGB) : 0.01 EDID Version (HDMI) : 0.01 Chip Type : SATURN 7 3D ASIC Version : 0.77 Debug Status : RELEASE Module Rom Ver: : 42T3_4PV3A0 RF Emitter Versioni : VR091</p> <p>UTT : 12 APP History Ver.:53810 PQL DB:LGE_PG_LGT10_xxN42</p>		<ol style="list-style-type: none"> 1. Adjust Check 2. ADC Data 3. Power Off Status 4. System 1 5. System 2 6. Model Number D/L 7. Test Option 8. External ADC 9. Pattern Selection 10. Panel Control 11. Spread Spectrum 12. Sync Level 13. Stable Count 14. ODC Test 15. Power Error History ▶ 	<p style="text-align: center;">POWER ERROR HISTORY</p> <p>1. Last History: <table border="1" style="width: 100px;"><tr><td>VA UVP</td></tr></table></p> <p>2. Last History: <table border="1" style="width: 100px;"><tr><td>VS OCP</td></tr></table></p> <p>3. Last History: <table border="1" style="width: 100px;"><tr><td>NONE</td></tr></table></p> <p>4. Error Count</p> <table border="1" style="width: 100%;"> <tr><td>1) PFC_DET Error</td><td>ff</td></tr> <tr><td>2) 5V OVP</td><td>ff</td></tr> <tr><td>3) 5V UVP</td><td>ff</td></tr> <tr><td>4) 17V OVP</td><td>ff</td></tr> <tr><td>5) 17V UVP</td><td>ff</td></tr> <tr><td>6) M5V OVP</td><td>ff</td></tr> <tr><td>7) M5V UVP</td><td>ff</td></tr> <tr><td>8) Vs OCP</td><td>1</td></tr> <tr><td>9) Vs OVP</td><td>ff</td></tr> <tr><td>10) Vs UVP</td><td>ff</td></tr> <tr><td>11) Va OVP</td><td>ff</td></tr> <tr><td>12) Va UVP</td><td>1</td></tr> </table> <p>5. Reset All ▶</p>	VA UVP	VS OCP	NONE	1) PFC_DET Error	ff	2) 5V OVP	ff	3) 5V UVP	ff	4) 17V OVP	ff	5) 17V UVP	ff	6) M5V OVP	ff	7) M5V UVP	ff	8) Vs OCP	1	9) Vs OVP	ff	10) Vs UVP	ff	11) Va OVP	ff	12) Va UVP	1
VA UVP																														
VS OCP																														
NONE																														
1) PFC_DET Error	ff																													
2) 5V OVP	ff																													
3) 5V UVP	ff																													
4) 17V OVP	ff																													
5) 17V UVP	ff																													
6) M5V OVP	ff																													
7) M5V UVP	ff																													
8) Vs OCP	1																													
9) Vs OVP	ff																													
10) Vs UVP	ff																													
11) Va OVP	ff																													
12) Va UVP	1																													

Select Item 15

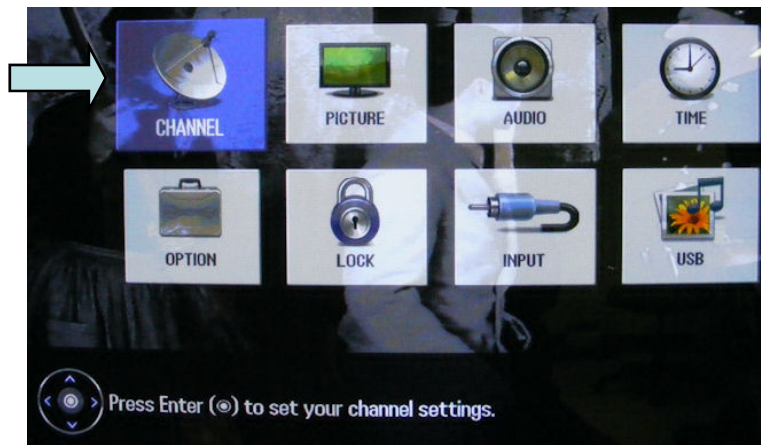
PFC_DET: Power Factor Control Detect
OVP: Over Voltage Protect
OCP: Over Current Protect
UVP: Under Voltage Protect



Accessing the Host Diagnostic Screen (Page 1 of 2)

Use the Host Diagnostic screen to investigate the signal quality of a problem channel.

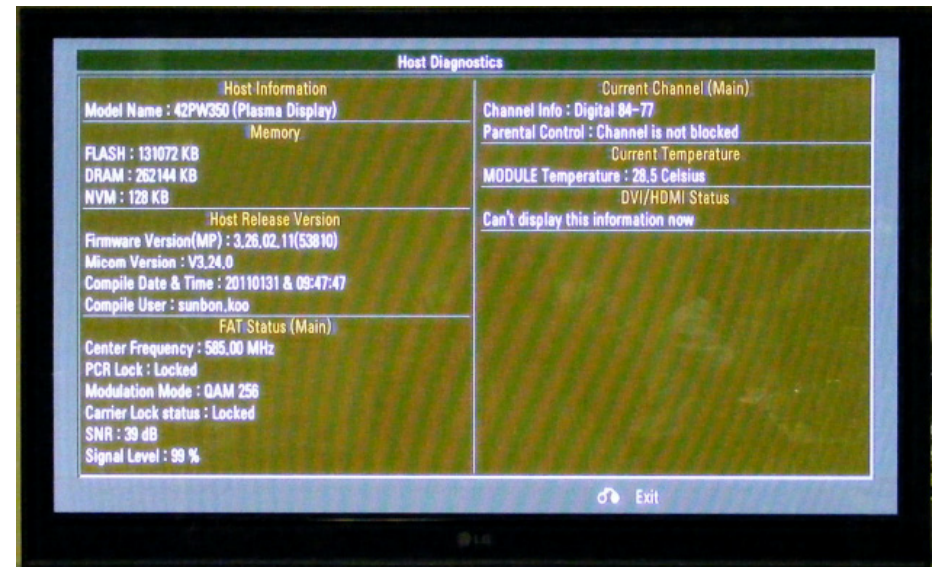
- 1) Place Television on the digital channel that may be showing problems.
- 2) Bring up the Customer's Menu. Highlight **"CHANNEL"**. Press **"ENTER"** on the remote.



- 3) The "CHANNEL" Menu appears.



- 4) Press the (1) Key 5 times.
The Host Diagnostics screen appears.



See next page for details.

42PW350 Understanding the Host Diagnostic Screen (Page 2 of 2)

Host Diagnostics

Host Information

Model Name : 42PW350-UA (Plasma Display)

Memory

FLASH : 131072 KB
 DRAM : 262144 KB
 NVM : 128 KB

Host Release Version

Firmware Version(MP) : 3.26.02.11(53810) Software Version
 Micom Version : V3.24.0
 Compile Date & Time : 20110131 & 08:45:52
 Compile User : sunbon.k

Channel Frequency

FAT Status (Main)

Center Frequency : 663.00 MHz Channel Frequency
 PCR lock : Locked Program Clock Reference (Locked or No)
 Modulation mode : QAM 256 Channel Type (8VSB, QAM 64, 256)
 Carrier lock status : Locked Channel (Locked or No)
 SNR : 37 dB Channel Signal to Noise Ratio
 Signal level : 100% Channel Signal Level (Above 80% good)

Current Channel (Main)

Channel Info : Digital 19-1 Blocked or not Blocked
 Parental Control : Channel is not blocked

Current Temperature

MODULE Temperature: 34.5 Celsius

DVI/HDMI Status

Can't display this information now

⏪ Exit